



Holiday Inn Express Strathclyde Access Statement



Holiday Inn Express
Strathclyde Country Park,
Hamilton Road,
Motherwell,
Scotland
ML1 3RB

Tel: 01698 858585
Email: reservations.strathclyde@holidayinnexpress.org.uk

June 2015

Table of Contents

Welcome	2
Travelling by Rail	3
Airbles Train Station	3
Motherwell Train Station	3
Bellshill Train Station	3
Hamilton Central Train Station	3
Travelling by Taxi	4
Car Parking and Drop Offs'	5
Main Entrance and Reception	6
Lift	7
Bedrooms	8
Bathrooms/ Shower Rooms and Toilets	10
Public Areas – Halls, Stairs, and Landings ...	11
Public Areas – Bar/ Lounges & Lobbies	12
Restaurant.....	13
Public Toilets	14
Conference and Meeting Rooms	15
Additional Information.....	16
Contact Information	16



Welcome

Relax at the peaceful Holiday Inn Express Strathclyde Park M74 Jct.5 hotel, set in quiet Scottish parkland and close to local business estates. Surround yourself with the rural beauty of Strathclyde Country Park, and enjoy handy road access to Motherwell, Glasgow and Edinburgh. Holiday Inn Express Strathclyde Park is set in leafy grounds just off the M74 motorway, and 18 miles from Glasgow International Airport.

The Holiday Inn Express at Strathclyde Park benefits from;

- Free accessible parking
- Step free level entry
- A lift to all floors
- 6 accessible bedrooms
- 2 accessible rooms have wet rooms
- Adjoining rooms
- Hearing loop
- Assistance dogs welcome

Getting Here

From the M74 exit at junction 5 (Raith Interchange) the hotel is adjacent to the Toby Carvery.

Travelling by Rail

Airbles Train Station

Accessible for wheelchair users

No accessible toilets at the station

The distance from Airbles Train Station to the Strathclyde Country Park entrance is 3 miles

http://www.nationalrail.co.uk/stations_destinations/AIR.aspx

Motherwell Train Station

Accessible for wheelchair users

No accessible toilets at the station

The distance from Motherwell Station to the Strathclyde Country Park entrance is 2.7 miles

http://www.nationalrail.co.uk/stations_destinations/MTH.aspx

Bellshill Train Station

Accessible for wheelchair users

No accessible toilets at the station

The distance from Bellshill Train Station to the Strathclyde Country Park entrance is 2.5 miles

http://www.nationalrail.co.uk/stations_destinations/BLH.aspx

Hamilton Central Train Station

Accessible for wheelchair users

No accessible toilets at the station

The distance from Hamilton Central Train Station to the Strathclyde Country Park entrance is 2.8 miles

http://www.nationalrail.co.uk/stations_destinations/HNC.aspx

More information at www.nationalrail.co.uk

Helpline: 0800 912 2901 18001 0800 912 2901 (hearing impairment)



Arriving by Bus / Taxi

The boundary of Strathclyde Country Park is served by local bus routes which stop close to the park, however local busses do not run through the park.

Please Note – Visitors would have to walk from the park boundary or take a taxi from train or bus stop.

Hamilton Central or Motherwell Stations - 41, 56, 107/109, 201, 253 and 266, all of which run between neighbouring towns.

Please check <http://www.firstgroup.com> for bus availability and timetables.

A seasonal bus X7 runs direct from Buchanan Bus Station to M and D's.

Please check <http://www.firstgroup.com> to confirm availability.

<http://www.travelinescotland.com/welcome.do>

Travelling by Taxi

There are a variety of local taxi companies in the area

Club Taxi's - 01698 834545

Can accommodate wheelchairs, buggies and assistance dogs

Penny Cars - 01236 752752

Can accommodate wheelchairs, buggies and assistance dogs

Red Line Cab's - 01698 261330

Advance booking required can accommodate wheelchairs, buggies and assistance dogs

Maxi's Taxi's - 01698 842525

Advance booking required can accommodate wheelchairs, buggies and assistance dogs



Car Parking and Drop Offs'

We have 120 car parking spaces including 5 accessible spaces. All spaces are reserved specifically for registered guests; the entire car park is covered by CCTV. Should you require any assistance to the hotel from your vehicle please call 01698 858585. There are notices in the car park with this number to make things easier when you arrive.

The main entrance to the hotel, benefits from a canapé that extends to the pick up/ drop off area, and step free access to the main reception, restaurant, bar area and lift.



Main Entrance and Reception

The reception is on the ground floor, and is accessed via two double automatic doors at the main entrance, measuring at 51"/ 130cm wide. There a slight gradient towards the front door which is mono-block and is a small ledge on the ground at each door; additionally both the porch and main reception have rugs on the floor immediately after the doorway.



The reception area bright and the floor is tiled, the reception desk is directly in front of the doors as you enter, it measures at 36"/ 91cm off the ground with a lowered section measuring at 23"/ 58cm. There is a hearing loop available at reception and at the bar, please ask a member of staff for assistance and we will be happy to help.



There is bench style seating available to the left of the door way measuring at 17"/ 43cm from the ground. Additional seating can be found at the bar and dining area which is located to the right of the reception desk, more information on these areas can be found below.

Lift

There is a lift to all floors the lift is located to the left of the reception desk. The lift measures at and benefits from the following;

- A mirror to aid reversing
- Tactile buttons
- Audio announcements
- Braille



Bedrooms

There are a total of 120 rooms across 3 floors; 6 of these are accessible and these rooms span the ground and first floors. Two of the accessible rooms have an adjoining room designed for ease of access should you be travelling with a carer.

These rooms are in high demand so we ask that you only request these rooms if it essential to your daily routine, please also be aware that you may have to book these rooms far in advance to avoid disappointment.

Further to this we request that when booking these room's you avoid using the central reservations number and call the hotel directly on 01698 858585 to ensure that you are given the most accurate, up to date information regarding booking.



There are raised numbers on the bedroom doors.

The entrance to the accessible rooms measure at 29"/ 74cm.

The rooms a bright and well lit benefiting from natural day light and artificial lighting.



There is a good contrast between the flooring and the walls and doors

The wardrobe space consists of rail measuring at 57"/ 145cm high and shelving.

There are TV's within the rooms with a remote to turn on subtitles.

There are emergency cords located within the accessible bedrooms.

Bathrooms/ Shower Rooms and Toilets

Within the bedrooms there is a slight lip to the bathroom area and a slight lip to the shower area.

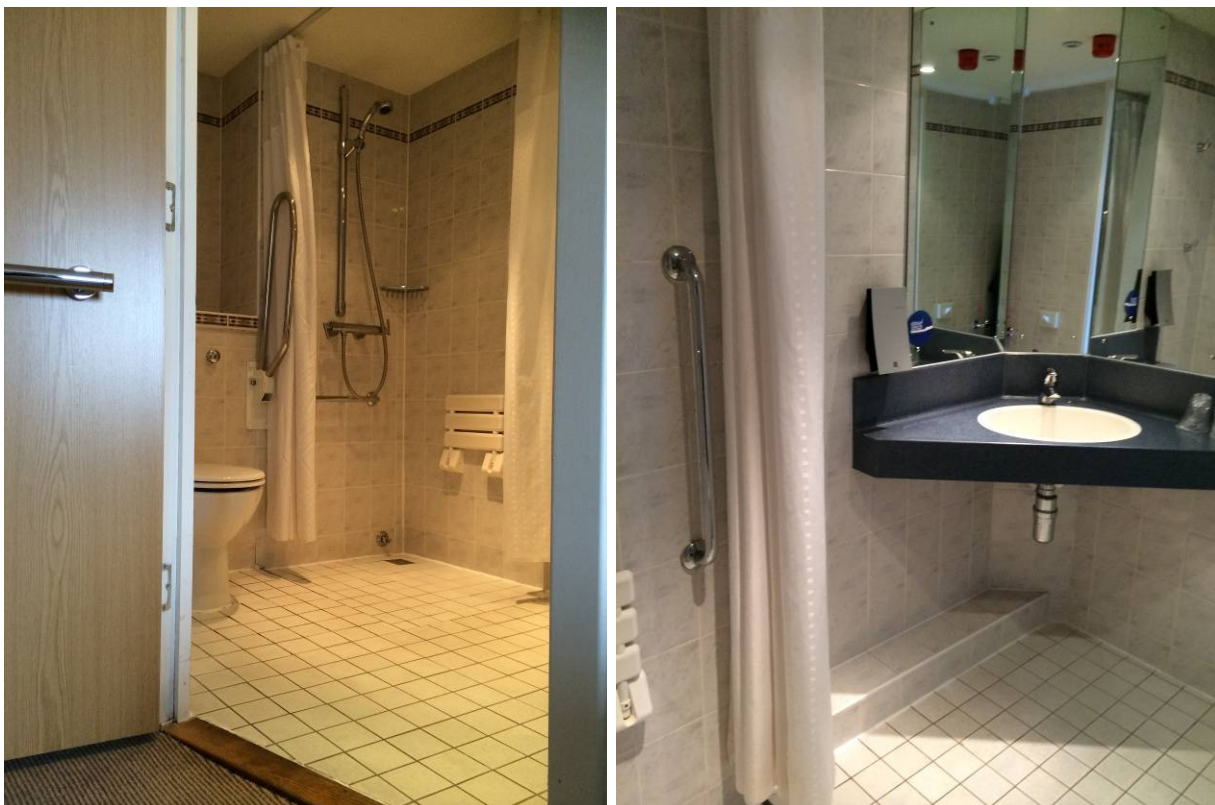
The WC measures at 16" from the ground.

The wash basin measures at 32" from ground, has no pedestal and benefits from lever taps.

There is 1 grab rail on the door three around the loo and two within the shower including a plastic folding seat.

The floor surface is hard and smooth and may be slippery when wet.

There is an emergency cord.



Public Areas – Halls, Stairs, and Landings

The public areas are well lit benefiting from bright spotlight on ceiling and natural day light.

The corridors measure at 50'' wide and benefit from some seating throughout.

The flooring is thick pile carpet with good contrast between the floors walls and doors.



The stairwells and fire exit areas are floored with linoleum and brightly lit with fluorescent tube lighting the fire exits are push bar doors measuring at 42'' wide and open onto a ramp to the car park which is flat tarmac, open air and well lit at night.

Public Areas – Bar/ Lounges & Lobbies

Both the bar and lounge areas are located on the ground floor and have step free level access throughout.

There is a hearing loop available at the bar.



There is a TV located in the lounge area which, where possible, has subtitles.

The furniture within the lounge area is free standing and can be moved.

The seating in the area consists of a mixture of high back chairs with arms on, couches and small cushioned stools.



Restaurant

The restaurant area is all open plan with level step free access and no doorways.

It is located on the ground floor in close proximity to the main entrance, reception, lift and public toilet.

The furniture within the restaurant is free standing and can be moved if required. The chairs are all high back with arms and the seat measures at 18" from the ground. Tables have four legs and measure at 29"/ 74cm high. The space between the legs measures at 22"/56cm for a single and 40"/102cm for a double.



There is a self service breakfast buffet area which is located within the dining room behind a small partition wall. The entrance to the area measures at 55"/140cm wide and the cutlery, drinks dispensers and buffet cabinets are all located at 45" or above. Should you require any assistance or table service please inform one of staff members as soon as possible.

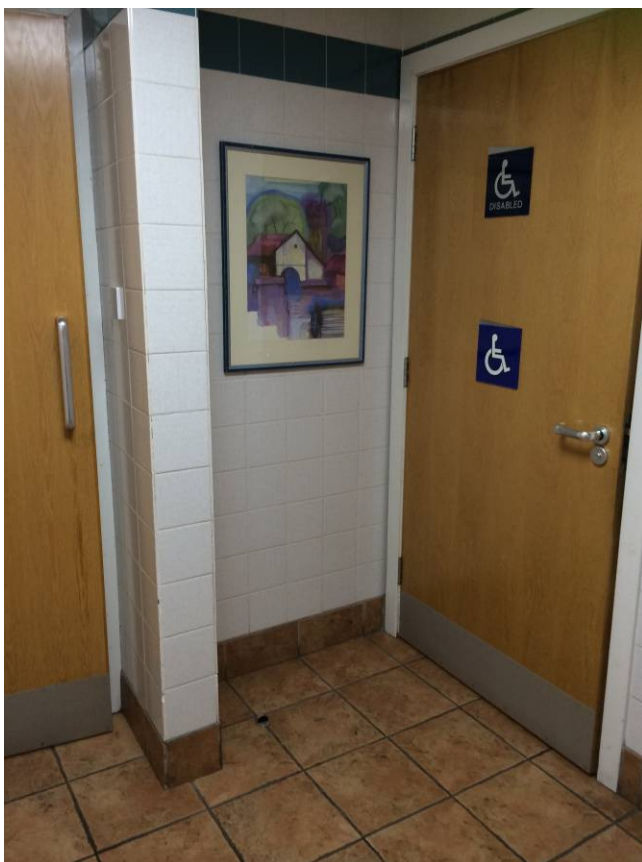
You can view our menus online here www.hiexstrathclyde.co.uk/ please inform us as soon as possible if you have any allergies or dietary requirements so that we can best accommodate your needs. For further information please call 01698 858585.

Public Toilets

The nearest public toilets including a unisex accessible toilet is located on the ground floor to the left of the restaurant, bar and reception area.

The entrance to the accessible toilet measures at 29"/ 73cm.

The toilet is bright and well lit with good.



Conference and Meeting Rooms

The meeting rooms within the hotel are located on the ground floor and have level step free access throughout.

The chairs are all high back with arms and the seat measures at 18" from the ground. Furniture within the meeting rooms is flexible and can be moved or adjusted to suit your needs.



Our meeting room facilities include:

- Seats up to 30 delegates theatre style
- Fully air-conditioned with natural daylight
- Blackout facilities and adjustable lighting
- Hearing loop available
- LCD projector, screen, flip charts & stationary kits
- Complimentary WiFi for duration of meeting
- Buffet lunch available
- Tea & coffee facilities
- Mineral water



Additional Information

There are to be significant improvements to the M73, M74 and M8, due for completion in spring 2017. If you are travelling by car it is likely that these roadworks will have an impact on your journey to Strathclyde Country Park. More information on the upgrades can be found here

www.transportscotland.gov.uk/m8m73m74.

Additionally you can receive live traffic updates at <http://trafficscotland.org/>

Contact Information

Holiday Inn Express
Strathclyde Country Park,
Hamilton Road,
Motherwell,
Scotland
ML1 3RB

Tel: 01698 858585

Email: reservations.strathclyde@holidayinnexpress.org.uk