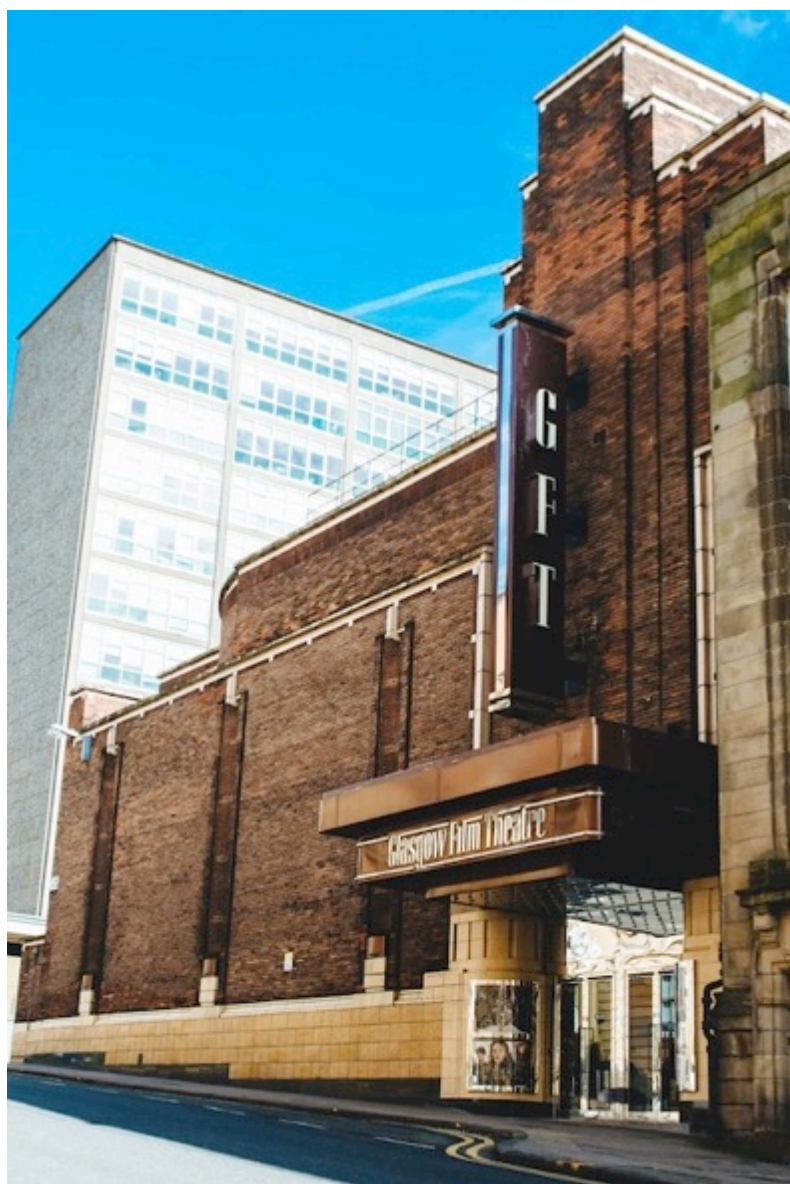


GLASGOW FILM / THEATRE

Access Statement for Glasgow Film Theatre (GFT) 2015



This access statement does not contain personal opinions as to our suitability for disabled people, but aims to accurately describe the facilities and services that we offer to all of our visitors.

Contents

Welcome	3
Planning your trip to GFT	4
Main Entrance	5
Inside the Venue (All Cinemas)	9
Cinema 1	9
Cinema 2	11
Cinema 3	15
Café Cosmo Upstairs	17
Ground Level Kiosk	18
Accessible & Standard Toilet	19
Education Room	22
Additional Information	23
Accessible Programme	23
Feedback	24
Contact Information	24
Appendix 1 - 3	25

Welcome

As an advocate for change, Glasgow Film endeavours to reduce inequalities by sharing a diverse film culture with the broadest range of people possible, deepening engagement with audiences to create an environment and a programme that is inclusive and accessible for everyone.

The first arthouse cinema to open outside of London, Glasgow Film Theatre (GFT) today exists as an institution for film-lovers. Opening in 1939 as the Cosmo and becoming Glasgow Film Theatre in 1974.

Glasgow Film is comprised of:

- Glasgow Film Theatre (GFT) <http://www.glasgowfilm.org/theatre/>
- Glasgow Film Festival (GFF) <http://www.glasgowfilm.org/festival/>
- Glasgow Youth Film Festival (GYFF) <http://www.glasgowfilm.org/festival/gyff>
- Glasgow Short Film Festival (GSFF) <http://www.glasgowfilm.org/gsff>
- Glasgow Film's learning and engagement programme.

For more information about the history of GFT, view a short video on youtube: <https://www.youtube.com/watch?v=cVUFyAPpUI4&feature=youtu.be>.

We look forward to welcoming you. If you have any queries or require any assistance please phone 0141 352 8603 or email dutymanager@glasgowfilm.org.

Key Access Features at GFT

- All three cinemas are wheelchair accessible
- All three cinemas have infrared sound facility
- Accessible toilet available
- Accessible parking available
- Selected films are Captioned and Audio Described
- Monthly brochure available in large print
- Monthly autism friendly screenings for young people and adults –
 - Take 2 Access: Autism friendly screenings for young people and their families
 - Access Film Club: recommended for individuals aged 15 and older.
- Monthly film programme (Visible Cinema) for Deaf and Hard of Hearing audiences

Planning your trip to GFT

GFT is situated within Glasgow city centre at 12 Rose Street, G3 6RB.

Booking

- Tickets can be pre purchased online from GFT website by visiting www.glasgowfilm.org, in person at the box office or by telephone 0141 332 6535 (£1.50 booking fee per transaction for telephone bookings)
- It is advised to book wheelchair spaces in advance through GFT Box Office by telephoning 0141 332 6535 or email dutymanager@glasgowfilm.org.
- It is advised to book headsets for infrared (to access audio description on selected films or to adjust the volume of films). Contact GFT Box Office by telephoning 0141 332 6535 or email dutymanager@glasgowfilm.org.

Train

- The nearest train stations are Queen Street and Central Station [TransPennine Express](http://www.transpennineexpress.co.uk) offer a handy guide to visiting Glasgow by train, or visit [National Rail](http://www.nationalrail.co.uk). (This link <http://www.nationalrail.co.uk/stations/sjp/GLC/stationOverview.xhtml> gives information about the accessibility of the station)

Underground

- The nearest underground is Cowcaddens www.spt.co.uk/subway. The underground is not accessible to wheelchair users.

Bus

- The closest bus stop is on Sauchiehall Street, near ABC O2. Buses servicing this stop include First Bus, Glasgow City Bus, City Sightseeing, McGills Bus and Stuarts Bus. Some buses are accessible for wheelchair users. More detailed information is available on First Bus website www.firstgroup.com.

Car Park Facilities at GFT

- The venue does not have its own car park. The nearest public car park is Cambridge Street Car Park, located off Cowcaddens Road.
- Nine accessible parking spaces are available on Cambridge Street, first street behind GFT. These are marked Blue Badge bays. Blue Badge holders may park free of charge and without limit.

Drop off Point

- The convenient drop off point is located directly in front of the venue. The drop off point does not have a drop curb.



Front of GFT drop off point

Accessible Taxi

- Glasgow Taxi – 0141 429 7070. Mobile App available (Glasgow Taxi Mobile App)
- Network Private Hire – 0141 557 1110. Mobile App available (Network Private Hire App)

Main Entrance

- The main entrance to GFT is located at 12 Rose Street. This is the only entrance for public use.
- GFT main entrance is open Sunday to Friday from 12 noon and Saturday from 11am. The cafes and cinemas open half an hour before first film.
- There is level access into the venue.
- The outside pavement is flush with the left hand side entrance to the building.
- The main doors are heavy and open automatically. They open towards you when exiting the building.
- The doors are double width, opening 120cm (3ft 11in) wide.
- There is a ramp or slope to access the main entrance door.
- The ramp or slope is sloping up the pavement to the entrance door (coming from Sauchiehall Street).
- The ramp or slope is easy and permanent.
- There is one step leading up to the door on the right.



Main entrance to GFT



Entrance doors closed



Entrance doors open

Box Office at GFT

The Box Office is located directly to the right when entering the building.

- There is level access to reception from the entrance.
- The reception desk is medium height, 78.5cm (2ft 6.5in)
- The desk does not have a lowered section.
- The lighting levels are bright.
- There is a glass window between you and Box Office staff.
- There is a hearing assistance system – fixed loop. Staff are trained to use the system.



Box Office

Concession tickets are available. Concessions apply to children (under 16), full-time students, over-60s, Jobseekers Allowance or Income Support recipients and registered disabled people. Please produce proof of eligibility when purchasing or collecting tickets.

Full Price: £8.50

Concessions: £7

Children: £5 (ages 14 & under)

All tickets cost £5 before 5pm every Friday

Tuesday treats – £5 tickets for selected Tuesday evening screenings

The CEA Card is accepted at GFT. More Information about the card is available on the CEA website at www.ceacard.co.uk.



View of foyer as you enter GFT. Box office is directly to the right.

Foyer

- The lighting level in the foyer is medium.
- There is a strong contrast between walls and floor.
- The flooring is short pile carpet.
- Step free access leading to stairs (access to Cinema 1 and upstairs café) and lift (access to Cinema 1).
- There is ramp access to Cinema 2, Cinema 3, lift and accessible & standard toilets.
- The Kiosk is directly in front of you as you enter the foyer.

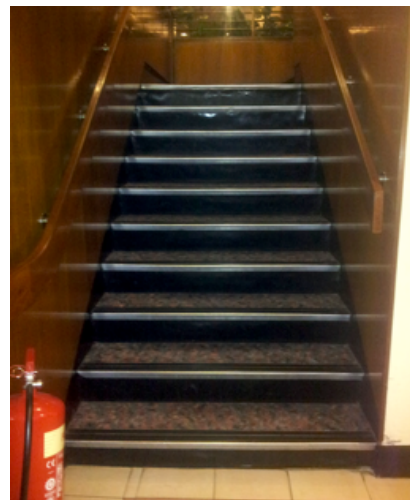
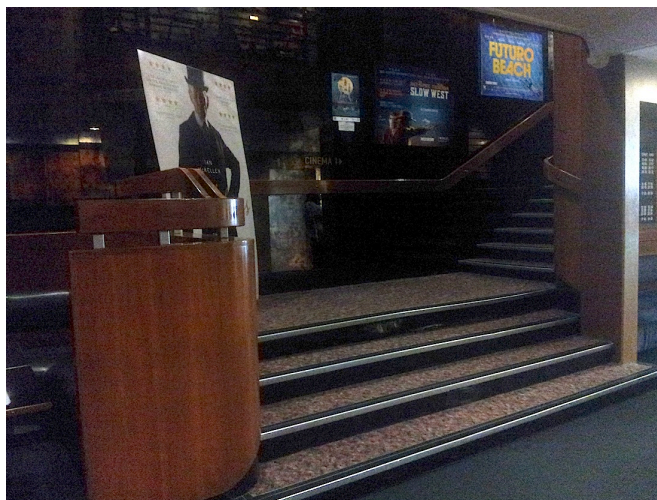
Inside the Venue (All Cinemas)

Glasgow Film Theatre has three cinema screens – Cinema 1, Cinema 2 & Cinema 3. Access to Cinema 1 is via a lift or stairs. Access to Cinema 2 & 3 is via ramped access.

Cinema 1

Access to Cinema 1 is by steps or a lift

- There are three entrance doors to cinema 1, two doors are accessible by stairs and one entrance is accessible by lift.
- Entry door on left side of upstairs café is 99cm (3ft 2.5in) (first door), 125cm (4ft 1in) (second door) & then 12 steps up to cinema space
- Entry door on right side entrance to cinema space is 119cm (3ft 10in) and then 12 steps up to cinema space.



Two options to access Cinema 1 and Café Cosmo upstairs

- There is a lift for public use. Cinema 1 is accessible by this lift.
- The lift is 31m (33yd 2ft) from the main entrance.
- Notify staff if lift access is required to Cinema 1. Staff do not need to be notified when you want to use lift to exit Cinema 1.
- The lift is located down the ramp to Cinema 2 & 3, and past the accessible toilet.
- The lift is a standard lift.
- The clear door width is 74cm (2ft 5in).
- The dimensions of the lift are 108cm (width) x 135cm (depth) (3ft 7in x 4ft 5in).
- There are not separate entry and exit doors in the lift.
- There is a mirror to aid reversing out of the lift.
- The lift does not have a visual floor indicator.
- The lift does not have an audible announcer.
- The controls for the lift are within reach for a wheelchair user.
- The lift does not have Braille or tactile markings.
- The lighting level in the lift is medium.



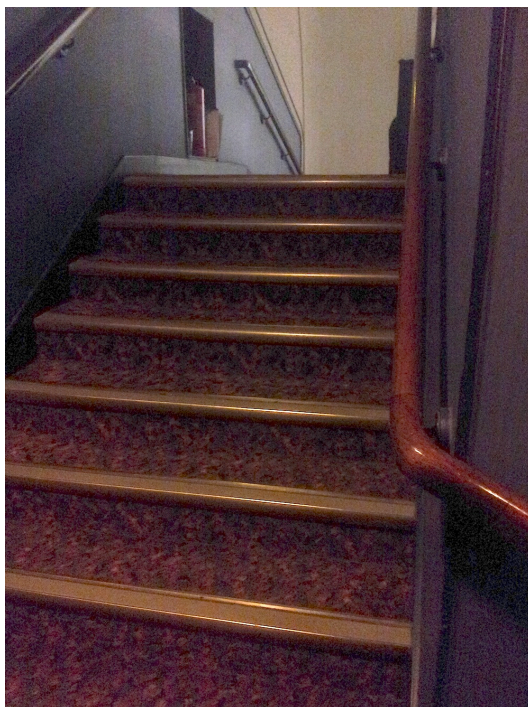
Lift to Cinema 1 is near the accessible toilet

Inside Cinema 1

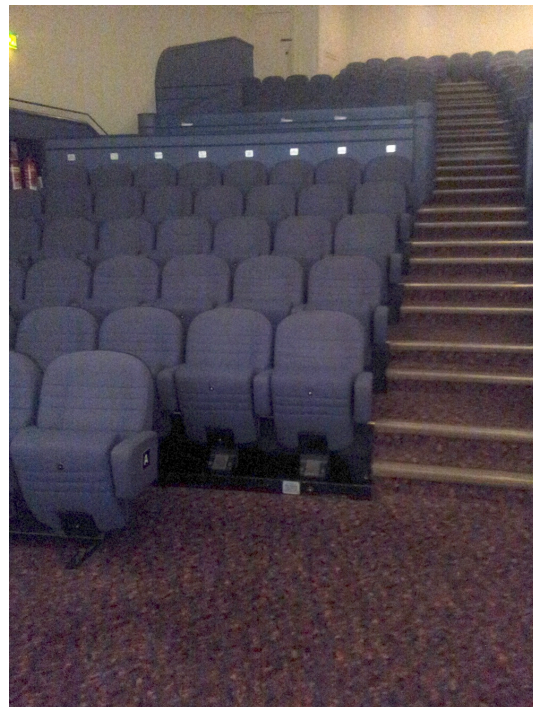
- Cinema 1 is the largest cinema and seats 394
- There are four wheelchair spaces located at the front of the cinema. A fixed seat is beside each wheelchair space.
- There are handrails for steps leading to the front of the cinema. There are no handrails for steps leading to the back of the cinema.
- Infrared sound system and headsets are available from Box Office (see [Appendix 1](#) for information about headsets).
- Selected films are Captioned and/or have Audio Description.
- Cinema style, pop up seats are available.
- The flooring is short pile carpet



View of Cinema 1 from the back row.



Stairs up into Cinema 1



Wheelchair spaces are in the front row

Cinema 2

Access to Cinema 2 is via a ramp

- When you enter the foyer, the ramp is located leading down to the left of the building.
- The ramp is easy and has handrails on both sides.
- The ramp is permanent.
- The width of the ramp is 100cm (3ft 3in).
- The entrance door to Cinema 2 is to the right at the end of the ramp.



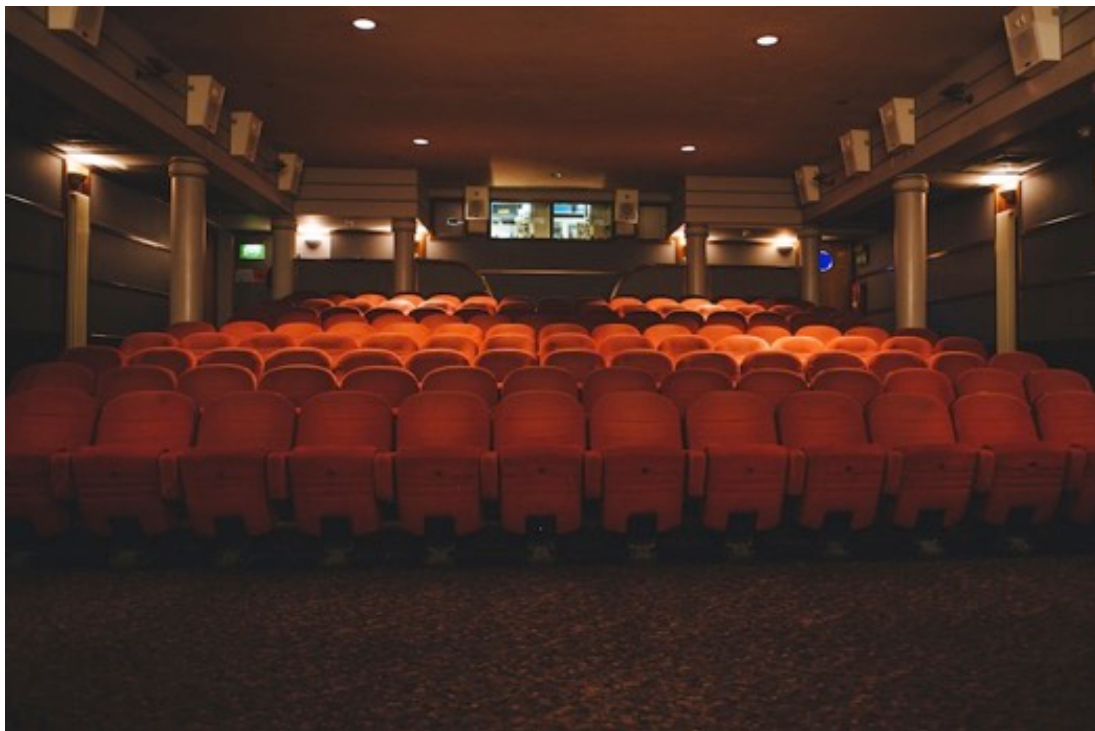
Ramp leading to Cinema 2 & 3, lift and accessible toilet

Inside Cinema 2

- Cinema 2 seats 142 people.
- There are 2 wheelchair spaces available at the back of the cinema. A fixed seat is beside each wheelchair space.
- Infrared is available and headsets are available at the Box Office (see [Appendix 2](#) for information about headsets).
- Selected films are Captioned and / or have Audio Description.
- There are no handrails on stairs.
- Stairs are lit at all times.
- Entry door to Cinema 2 is 136cm (4ft 5in) wide. Two doors open out into hallway.
- Cinema style, pop up seats are available.
- The flooring is short pile carpet.



Back of Cinema 2 – view from wheelchair spaces



Front of Cinema 2 – view of cinema space



Wheelchair spaces in back row

CINEMA 3

Cinema 3 is the smallest cinema. The screen seats 60 people.

Access to Cinema 3 is via a ramp

- The ramp is located leading down to the left of the building.
- The ramp is easy and has handrails on both sides.
- The ramp is permanent.
- The width of the ramp is 100cm (3ft 3in).
- The entrance door to Cinema 3 is to the left at the end of the ramp.



Ramp leading to Cinema 2 & 3, lift and accessible toilet

Inside Cinema 3

- Entry door to Cinema 3 is 91cm (2ft 11.5in) wide.
- There are two wheelchair spaces available at the back of the cinema. A fixed seat is beside each wheelchair space.
- There are no handrails on stairs.
- Stairs are lit at all times.
- Fixed loop system available.
- Infrared and headsets available from the Box Office (see [Appendix 3](#) for information about headsets).
- Selected films have Audio Description and / or Captions.
- Cinema style, pop up seats available (black leather seats).
- All seats have cup holders.
- The flooring is short pile carpet.



Back of Cinema 3 – view from wheelchair spaces



Front of Cinema 3 – view of entire cinema space & steps to each row.

Cafe Cosmo Upstairs

Café Cosmo is accessible by stairs. The café offers cold and hot drinks (tea, coffee, juice, beer, wine etc) as well as a selection of cakes, popcorn and other sweets.

- Once inside the building, there is not level access to the upstairs bar.
- Food and drinks are available from the bar. These items can also be taken into the cinema.
- The Bar is self-service but table service can be arranged if needed.
- The service counter does not have a lowered section.
- The upstairs bar is not wheelchair accessible. Everything that is available at the upstairs bar is also available at the ground level kiosk, which is wheelchair accessible.
- The tables and chairs are not permanently fixed.
- Some chairs have armrests and all chairs have a back.
- The flooring is tile.
- The distance between the floor and the lowest table is 70cm (2ft 4in).
- The distance between the floor and the highest table is 72cm (2ft 4in).
- Menus are on the wall. Copies available from the café on request.
- Menus are available in large print.
- Menus are clearly written and presented with black font and white background.
- The type of food served is snacks and drinks. Hot food is not served.
- All dishes and cups are white. Cutlery and teapots are metal. Most items are available in take away cups and containers.
- Some cakes are Gluten free. There is dietary information available.
- There is background noise if the café is busy or if music is playing.



View of upstairs Café from entrance door



View of the upstairs café service counter and bar area

Ground Level Kiosk

There is level access from the main entrance to the ground level kiosk. The ground level kiosk offers the same refreshments as the upstairs bar/café.

- The ground level kiosk is located straight ahead as you enter the building.
- The kiosk is wheelchair accessible.
- A large print copy of the brochure is available at the kiosk and Café Cosmo.
- The kiosk is self-service but table service can be arranged if needed.
- Food and drinks are take away only and all items can be taken into the cinema.
- There is a seating area to the right of the kiosk.
- No tables are permanently fixed. Table height is 70.5cm (2ft 3.75in)
- Some seats are fixed and some seats can be moved. Stools are available.
- The flooring is short pile carpet.
- The counter at the kiosk is medium height 83cm (2ft 8.68in)
- All menus are on the wall to the left of the kiosk. Copies available from the kiosk on request.
- Menus are available in large print.
- Menus are clearly written and presented with black font and white background.
- The type of food served is snacks and drinks. Hot food is not served.
- Some cakes are Gluten free. There is dietary information available for cakes.



View of ground level kiosk service counter

Accessible & Standard Toilet

- There are accessible toilets within this venue designated for public use.
- The toilet is not for the sole use of disabled people.
- There is pictorial signage on or near the toilet door.
- The accessible toilet is located down a ramp, towards Cinema 2 & 3.

Accessible Toilet – Features & Dimensions

- It is 12m (13yd 4in) from the foyer to the accessible toilet.
- It is 8m (8yd 2ft) from the accessible toilet to the furthest screen.
- This is a unisex toilet.
- A key is not required for the accessible toilet. The door has a twist lock.
- The door opens outwards and is heavy
- The width of the accessible toilet door is 86cm.
- The dimensions of the accessible toilet are 178cm (width) x 160cm (depth) (5ft 10in x 5ft 3in).
- There is sufficient turning space in the cubicle for a wheelchair user.
- There is a lateral transfer space. As you face the toilet pan the transfer space is on the left. The lateral transfer space is 90cm (2ft 11in).
- There is a dropdown rail on the transfer side.
- There is not a flush on the transfer side.
- The tap type is lever and there is a mixer tap.
- There is a functional emergency alarm available.
- Disposal facilities are available in the cubicle.
- Red cord hanging down will activate the alarm. Staff will come to assist.



Accessible toilet view from entrance door and close up

Accessible Toilet – Fixtures

- Wall mounted rails are available.
- As you face the toilet the wall mounted grab rails are on both sides.
- There is not a shelf within the accessible toilet.
- There is a mirror placed at a lower level
- The height of the toilet seat above floor level is 49cm (1ft 7in).
- There is a towel dispenser.
- The towel dispenser cannot be reached from seated on the toilet.
- The towel dispenser is not placed higher than 100cm (3ft 3in).
- The toilet roll holder can be reached from seated on the toilet.
- The toilet roll holder is not placed higher than 100cm (3ft 3in).
- There is a sink 70cm (2ft 3.56in) high.
- The sink can be reached from seated on the toilet.
- The sink is not placed higher than 74cm (2ft 5in).



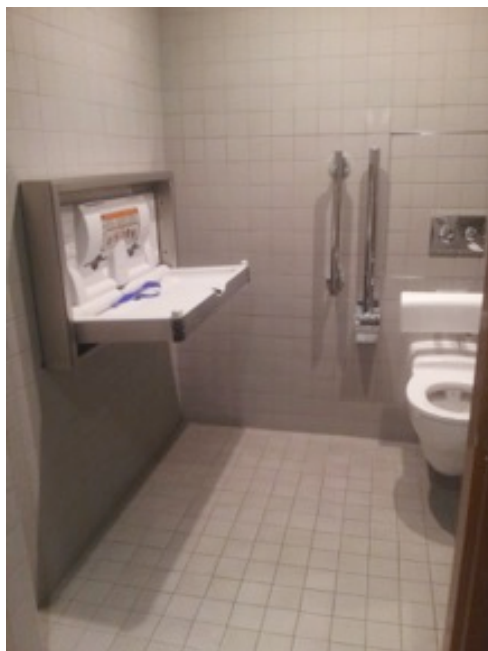
Accessible toilet sink, mirror & towel dispenser

Accessible Toilet – Colour Contrast and Lighting

- The contrast between the external door and wall is good.
- The contrast between the internal door and wall is good.
- The contrast between the walls and floor is poor.
- The lighting levels are bright and florescent lighting is used in the toilet.

Baby Change Facilities

- Baby change facilities are located to the left in the accessible toilet.
- The height of the baby change table once extended is 88cm (2ft 11in).



View of baby change facility from entrance door and close up

Standard Toilet

- The female and male toilets are located opposite the accessible toilet, near Cinema 2 & 3. Toilet entrance door is 76cmv (2ft 6in) wide and cubicle door is 51.5cm (1ft 8in) wide.
- The floor is tile.
- The female and male toilets are 30m (32yd 2ft) from the main entrance.
- Lighting levels are medium.
- There are further male and female toilets off the landing in the stairs to Cinema 1. There are 12 steps from these toilets up to Cinema 1.

Education Room

- Seats 18 people
- Available for hire, for information email dutymanager@glasgowfilm.org
- Equipped with internet access, Blu-Ray, DVD, Data and VHS projection to a wall mounted screen, plus a whiteboard and flip-chart.
- Seats and tables are not fixed.
- Seats have backs but no not have arms. Seats are cushioned.
- The flooring is short pile carpet.
- The room is used for film discussion groups. All welcome.
 - **Glasgore! Horror/Cult Film Discussion Group** meets on the first Wednesday of each month
 - **Film Discussion Group** meets on the second Wednesday of each month.
- This room is not wheelchair accessible.



Education room

Additional Information

- Assistance dogs are welcome in all areas of GFT. Water bowls are available from the kiosk and upstairs café.
- The venue is well ventilated.
- Films are rotated to allow access to all films.
- Subtitles and Captions are available on selected films.
- Audio Description is available on selected films.
- Wheelchairs may be left with the patron.
- A companion/carer may sit next to wheelchair users.

Accessible Communication

- Staff members are Text Relay aware.
- The brochure is available from the box office, foyer and online. The online copy can be accessed from <http://issuu.com/glasgowfilmtheatre>
- GFT monthly brochure is available in large print from the Box Office and Kiosk.

Staff Training

- Staff members receive disability and equality training.
- All Duty Managers have had first aid training.
- Staff members receive deaf & hard of hearing awareness training.
- Front of House and Management staff members are trained in basic British Sign Language (BSL) training.

Accessible Programme

The past year has been an exciting period of development around equalities and access. GFT offers a range of accessible screenings and recently launched two new programmes, Access Film Club and Visible Cinema. All of the accessible film screenings provide a welcoming environment where participants can watch a range of films.

Visible Cinema (Cinema 3)

In March 2015 GFT launched Visible Cinema, a new programme of film screenings for Deaf and Hard of Hearing audiences. Films are captioned, subtitled or British Sign Language (BSL) interpreted, followed by a post film discussion. The first initiative of its kind in Scotland, Visible Cinema will bring awareness to cinema access and provide opportunities to enjoy a range of films in a relaxed and welcoming environment. Visible Cinema is supported by Creative Scotland, Solar Bear and Film Hub Scotland, part of the BFI's Film Audience Network.

Access Film Club (Cinema 3)

GFT, together with Scottish Autism host a monthly Film Club, which includes a screening and post film discussion in a relaxed and welcoming environment. A theme is selected each month (Superheroes, Music Documentaries, Adventure etc) and the public can vote on the film they want to see. On the night, the chosen film is shown and afterwards individuals have the chance to take part in a group discussion about the movie. Access Film Club is recommended for people aged 15 and over. Please note, the volume and light levels are standard cinema settings for these screenings. There are no ads or trailers before these films.

Take 2 Access: Autism Friendly screenings (Cinema 2)

Take 2 Access screenings are for children with Autism Spectrum Disorders and their families, and are also suitable for any child with a disability who would enjoy seeing a film in a 'low sensory' environment'. The films have no subtitles, the volume is turned down, the house lights left on low, there are no trailers or ads and children can make noise and move around. There is also a quiet space available if needed. Take 2 Access screenings are held on the first Saturday of each month.

Caption & Audio Description (All three cinemas. See website for more details)

GFT offers both Audio Description and Captioning on selected titles and selected screenings. Audio Description is a service for partially sighted or blind people. Captioning is a service for the hard of hearing or deaf who rely on subtitling to enable them to follow the film's dialogue. Headsets are available to collect from Box Office when you pick up your tickets prior to the film screening. Headsets can be used to access Audio Description, to adjust the volume of films (including captioned films) and to assist with hearing post film discussions or Q&As.

Feedback

We are always looking for ways to improve the service we provide our visitors, so please contact us if you have any comments or suggestions about this access statement or anything else that you think can improve your visit to the Film Theatre:

Contact Information

Address: 12 Rose Street, Glasgow G3 6RB

Telephone: 0141 352 8603

Email: dutymanager@glasgowfilm.org

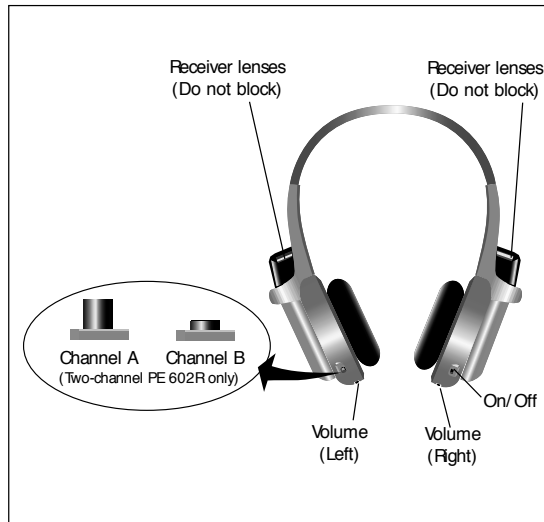
Website: www.glasgowfilm.org

Glasgow Film Theatre (known as GFT) is a charity registered in Scotland, No.SC005932.

Appendix 1

Cinema 1 Headsets

Phonic Ear PE602R (Total 9 headsets)



Turning on the headset

There is a switch on the bottom of the right headset speaker.

Wearing the headset

Put the headset on so that the L speaker covers the left ear and R speaker covers the right ear.

Setting the channel/audio option

There are two audio enhancement options – audio description and audio from the film.

To select the correct Channel push the button under the left speaker.

1. Audio Description – Push button in (Channel B)
2. Audio from film – Push button out (Channel A)

Setting the volume and balance control

The volume and balance control is located under each corresponding speaker. Turn the volume/balance control for each speaker to find a sufficient and comfortable level.

No loop system available in Cinema 1

Appendix 2

Cinema 2 Headsets

Sennheiser Set HDI405S (Total 5 headsets)



Wearing the headset

Put the headset on so that the rectangle pendent rests under the chin. The receiver and volume control must be facing the cinema screen for it to work. Once wearing the headset the receiver is on the left and volume control is on the right. The receiver must not be covered during use, as this would interrupt the audio transmission.

Turning on the headset

Battery must be inserted into the headset for it to turn on. The battery plugs in under the receiver. Turn the volume control to switch on the receiver and control volume levels.

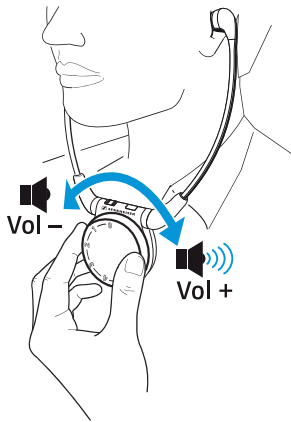
The headset has one audio option – audio description.

No loop system available in Cinema 2

Appendix 3

Cinema 3 Headsets

Sennheiser Set HDI830 (Total 10 headsets)



Turning on the headset

Pull the left and right earbows apart gently and the headset will turn on.

Wearing the headset

Put the headset on so that the receiver (round part of headset) rests under your chin. The Sennheiser logo and volume control will be facing the cinema screen.

On the reverse side of the receiver there are two controls. **Balance control** is on the left and **channel/audio option** is on the right (slightly indented).

Setting the channel/audio option

There are three audio options – audio description, film audio or audio description and film audio together.

To select the correct Channel push and hold the right button until you find the correct audio option

- 1) Audio Description – Channel 1 will light up only (left light).
- 2) Audio from film – Channel 2 will light up only (right light)
- 3) Audio Description and audio from film – Channel 1 & 2 will light up together (left & right light)

Setting the balance control

Turn the balance control to the left or right in order to increase the volume for the corresponding ear.

Adjusting the volume

The volume control is on the front of the receiver. Turn the control left or right to find a sufficient and comfortable level.

Loop System

Cinema 3 has a loop system for hearing aides with a T-switch. You will be able to access audio from films and live audio (pre/post film discussions, Q&A events or talks) held in the cinema.